



Port of  
**LONG BEACH**  
THE PORT OF CHOICE

**BIPC 2024**

***Decarbonization and Digitalization***

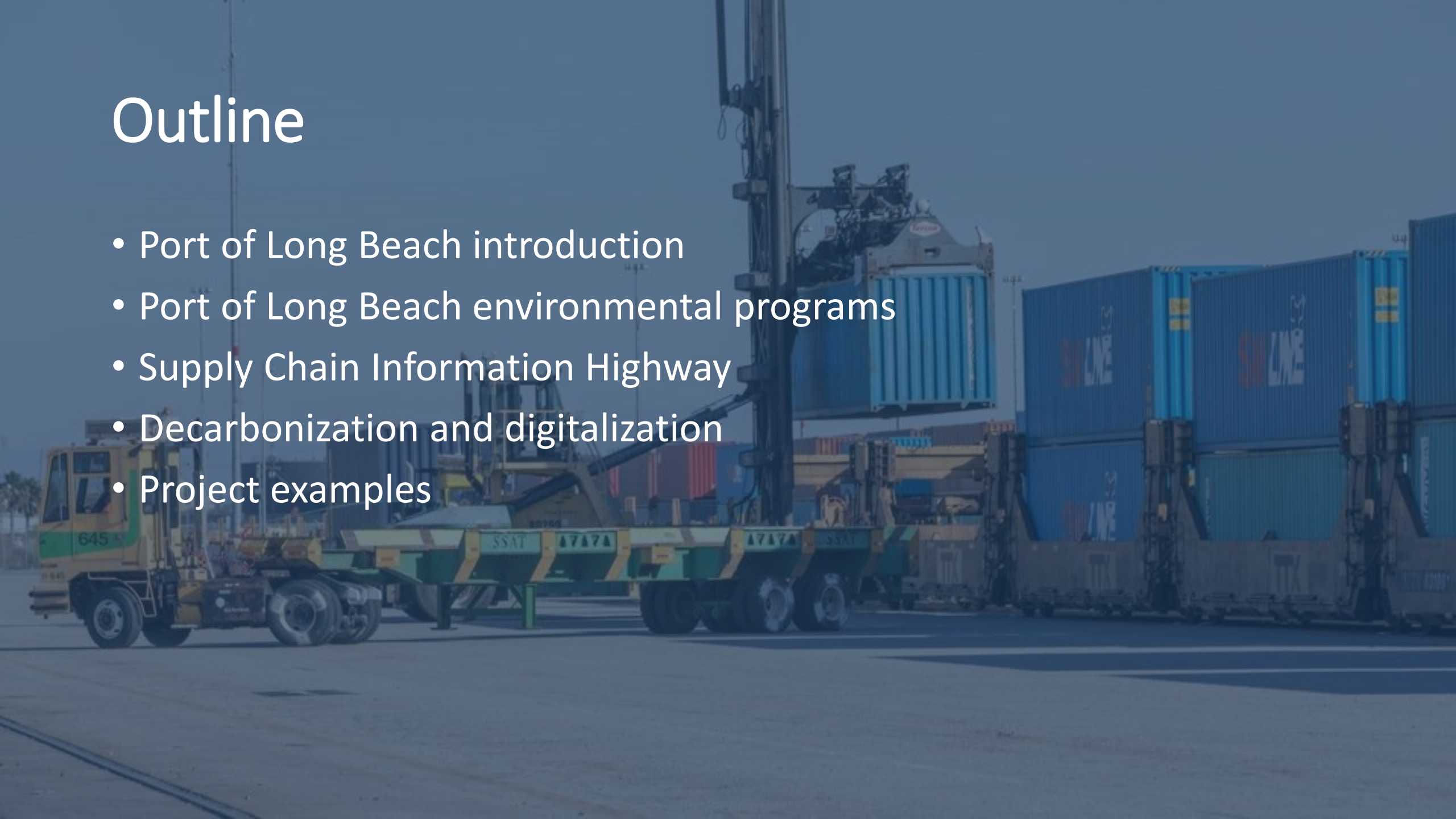
**Roger Wu**

**Director, Business Development, Port of Long Beach**

**August 25, 2024**

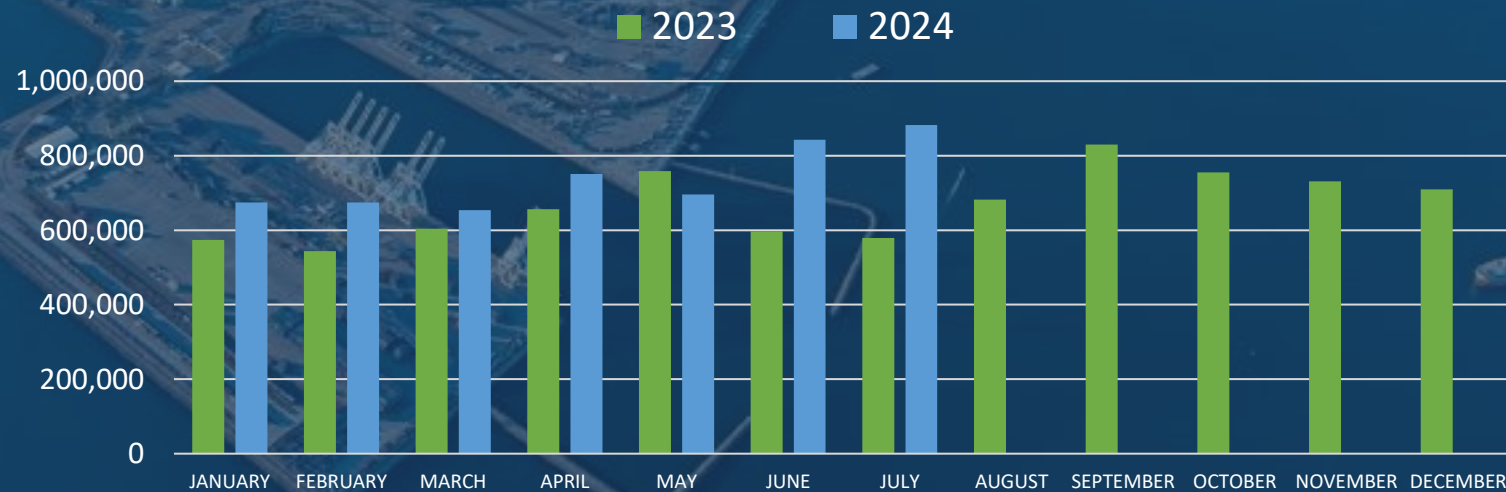
# Outline

- Port of Long Beach introduction
- Port of Long Beach environmental programs
- Supply Chain Information Highway
- Decarbonization and digitalization
- Project examples



# Port of Long Beach

- Located in Southern California, West Coast of the U.S.
- 2<sup>nd</sup> busiest container port in the U.S.
- A major Transpacific trade gateway for the U.S. Markets
- CY2023: 8 million TEUs and 175 million tons



# Environmental Programs

- Clean Air Action Plans (2006)
- Clean Trucks Program (2008)
- Shore-Power Incentive Program (not active)
- Low-Sulfur Fuel Incentive Program (not active)
- Green Flag Program (Vessel Speed Reduction)
- Green Ship Incentive Program
- Additional programs under consideration



# Supply Chain Information Highway

- Lessons learned from supply chain disruptions 2020-2022
- Cargo visibility driven by stakeholder data
- Inter-operability and flexibility
- Free to use by stakeholders
- Received \$7.8 million state grant funding
  - Universal Truck Appointment System
  - System maintenance and enhancement
  - Sustainability practices tracking
  - Collaboration with U.S. and Asian ports
  - Enhanced reporting capabilities
  - Incorporation of AI technologies



Supply Chain   
**INFORMATION  
HIGHWAY**



# Decarbonization and Digitalization

- Visibility increases operational efficiency
- Data-driven operational enhancements
- Sustainability program tracking and documentation
- Inter-operability for international collaborations
  - Green Shipping Corridor (Shanghai)
  - Green Digital Shipping Corridor (Singapore)
- Digital infrastructure for the future

## 2022 EMISSIONS INVENTORY

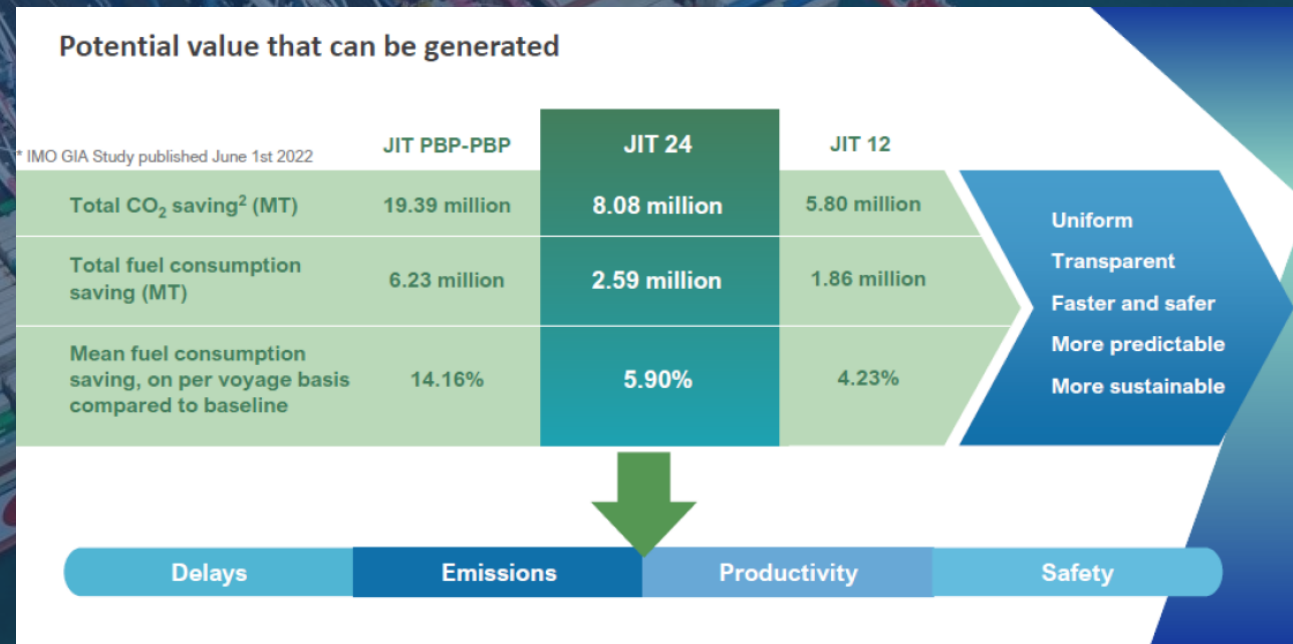


THIS WAS DURING A TIME WHEN  
CONTAINER CARGO JUMPED 36%

Compared to 2005 Levels

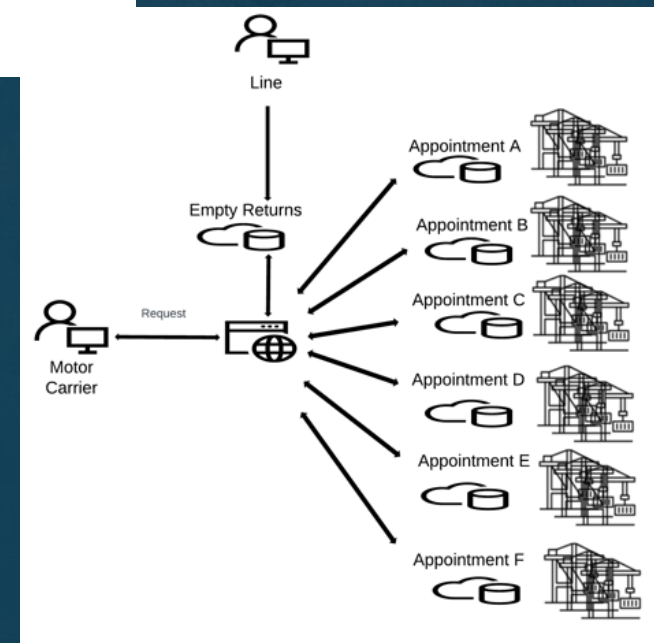
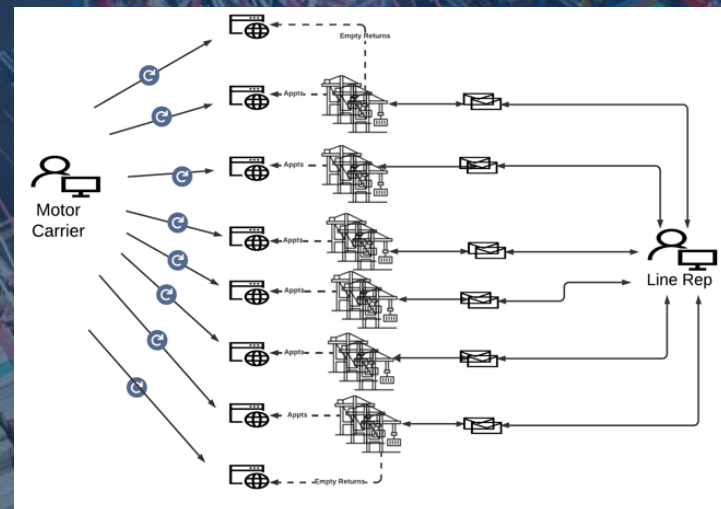
# Example: Digital Shipping Corridor

- Vessel routing optimization
  - Arrival/Departure data exchange
  - Vessel position data exchange
  - Single platform data collection
  - Operations conditions input
  - Routing calculation and Optimization
  - Sustainable Benefits
- Alternative fuel usage tracking



# Example: Universal Truck Appointment System

- Single-point access point for truck appointments
- Better visibility
- More efficient use of assets
- Reduces idling and wait-time
- Reduces traffic congestions
- Less truck-based air emissions





# Thank You

- Q&A
- Web: [www.polb.com](http://www.polb.com)
- Contact: [roger.wu@polb.com](mailto:roger.wu@polb.com)

